

START WITH **EXCELLENCE**  
FINISH WITH **CONFIDENCE**



## NEW AND IMPROVED SYSTEMS:

Now my mailing operation gives me even shorter setup times, better print quality and increased profitability.



# ENVELOPE IMAGER XT 4.0



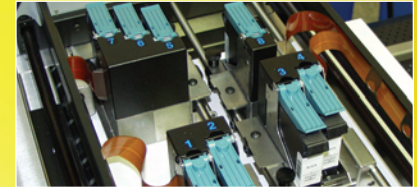
The Envelope Imaging Company\*



# ENVELOPE IMAGER XT 4.0



<b>PRINT TECHNOLOGY</b>	Thermal Inkjet, Eight HP 45A-Style High Capacity Cartridges		
<b>ADDRESS SPEED</b>	34,000 /hour at 150 dpi 25,000 /hour at 200 dpi 20,000 /hour at 300 dpi 11,000 /hour at 600 dpi (9 Lines on 4"x 6" Postcard)	26,000 /hour at 150 dpi 19,000 /hour at 200 dpi 15,000 /hour at 300 dpi 7,200 /hour at 600 dpi (9 Lines on #10 Envelopes)	
<b>PRINT QUALITY</b> (Dots Per Inch)	<b>Description</b>	<b>Dots Per Inch</b>	<b>Resolution</b>
	High Quality	600 d.p.i.	600 x 600 dpi
	Letter Quality	300 d.p.i.	600 x 300 dpi
	Standard Quality	200 d.p.i.	600 x 200 dpi
	Draft Quality	150 d.p.i.	600 x 150 dpi
<b>IMAGE AREA</b>	4" X 17" w/ 13" vertical range		
<b>PRINT HEAD SPLIT</b>	3 Pen Stitched + 2 Pen Stitched + 2 Pen Stitched + 1 Pen Design		
<b>PROCESSOR</b>	AMD TigerSharc 100 MHz DSP with Dual Calculation Technology		
<b>PRINT ORIENTATION</b>	Normal and Reverse		
<b>FONTS</b>	All TrueType fonts available on PC		
<b>INK MONITOR</b>	Visible on Display		
<b>GRAPHICS, LOGOS, AND BARCODES</b>	Allows printing of graphics, logos, and barcodes		
<b>MATERIAL SIZE</b>	Length – 5" to 17" ■ Width – 3" to 13.5"		
<b>MATERIAL THICKNESS</b>	Up to 3/8"		
<b>FEEDER</b>	In-line design works with various input devices		
<b>FEEDER INTERFACE</b>	Start-Stop Control		
<b>TRANSPORT TYPE</b>	Five Channel AccuTrak Vacuum Transport with Repositionable Outer Belts/Side Guides		
<b>VACUUM TYPE</b>	Through-the-Belt Triple Pancake Fans with On/Off Control		
<b>SOFTWARE</b>	Windows™ Printer Drivers for Windows™ 98, 2000, NT, ME, and XP		
<b>PC INTERFACE</b>	Centronics Parallel and USB 2.0		
<b>DIAGNOSTICS</b>	Resident in firmware		
<b>FIRMWARE UPDATE</b>	Flash PROM update		
<b>DUTY CYCLE</b>	120 million addresses total or 2,000,000 per month over a 5-year life cycle		
<b>DIMENSIONS</b>	11.5" H x 30" L x 23" W (292 mm H x 762 mm L x 584 mm W)		
<b>WEIGHT</b>	90 lbs. (40.9 kg)		
<b>ELECTRICAL</b>	115VAC or 240VAC, 50/60 Hz		
<b>OPTIONS</b>	EASYFeed Feeders, T-750/T-950 In-line Tabbers, XPS-ProFeed Feeders, Conveyor/Stacker/Dryer, Right-2-Left Configuration		
<b>COUNTERS</b>	One operator resettable job counter, one permanent lifetime counter		
<b>MEMORY</b>	64MB		



The RENA Systems Envelope Imager XT 4.0 has horsepower. It has all the features of the XT 3.0 with a larger 4" print area. Split over four separate print modules for unprecedented coverage and extreme flexibility. Eight HP 45A-style high capacity cartridges and TrueType fonts provides options for adding attention lines, postal barcodes, return addresses and indicia at the same time. The Envelope Imager XT 4.0 is fast and tireless, producing superior results at production speeds of over 34,000 postcards or 26,000 #10 envelopes/hr.

Supporting this output is the AccuTrak Transport – a wide center belt with a powerful vacuum assist that keeps pieces in place through transport. Outer transport belts can be customized to the size of the mail piece.

The XT 4.0 accepts materials up to 3/8" thick and runs in-line with RENA Systems T-750 and T-950 tabbers. Cartridge capping stations are standard. Storing inkjet cartridges increases their yield by keeping them fresh in a special station.

## KEY FEATURES

- **4" high print area from four individual print heads for maximum coverage/versatility**
- **Prints speeds of 34,000 postcards/hr**
- **Runs in-line with RENA Systems T-750 and T-950 tabbers**
- **Five-Channel AccuTrak Transport with repositionable belts**
- **Integrated cartridge storage system**

AUTHORIZED RENA SYSTEMS DEALER:



136 Green Tree Road  
PO Box 1069  
Oaks, PA 19456-1069  
Toll Free: 888.444.7362



[www.renausa.com](http://www.renausa.com)